



## Official copy of register of title

Title number ON293667

Edition date 14.09.2010

- This official copy shows the entries on the register of title on 30 MAR 2011 at 13:43:42.
- This date must be quoted as the "search from date" in any official search application based on this copy.
- The date at the beginning of an entry is the date on which the entry was made in the register.
- Issued on 08 Apr 2011.
- Under s.67 of the Land Registration Act 2002, this copy is admissible in evidence to the same extent as the original.
- For information about the register of title see Land Registry website [www.landregistry.gov.uk](http://www.landregistry.gov.uk) or Land Registry Public Guide 1-A *guide to the information we keep and how you can obtain it*.
- This title is dealt with by Land Registry, Gloucester Office.

### A: Property Register

This register describes the land and estate comprised in the title.

OXFORDSHIRE : OXFORD

- 1 The Freehold land shown edged with red on the plan of the above title filed at the Registry and being Land lying to the west of Oxpens Road, Oxford.
  - 2 ✓ The land in this title has the benefit of but is subject to the rights contained in the Agreement dated 1 August 1972 referred to in the Charges Register.
  - 3 ✓ The land has the benefit of but is subject to the rights granted by a Deed dated 1 October 1984 made between (1) British Railways Board (2) Ebury Developments Limited and (3) National Westminster Bank PLC.
- NOTE: Copy filed under ON174283.*
- 4 By the Deed of Release and Grant dated 1 October 1984 referred to above some of the easements rights reservations and exceptions contained in the Agreement dated 1 August 1972 referred to above were expressed to be released as therein mentioned.
  - 5 (14.09.2010) The Demarcation Agreement dated 26 August 2010 referred to in the Charges Register is expressed to grant rights for the benefit of land in this title. The said Deed also contains subjective rights and this registration takes effect subject thereto.

*NOTE: The beneficial rights are included in the registration only so far as the grantor was entitled to grant them. The evidence produced on registration did not show whether the grantor owned the servient land, or had sufficient rights over it to make the grant.*

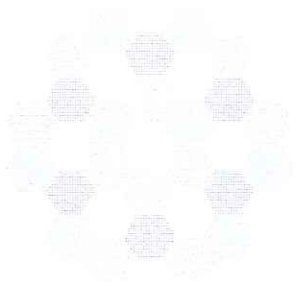
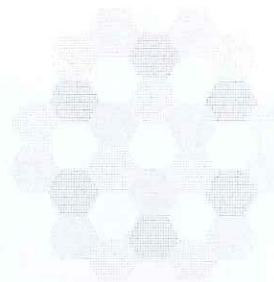
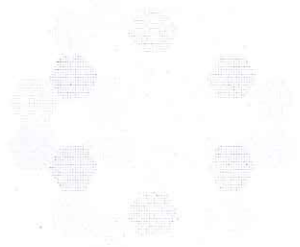
### B: Proprietorship Register

This register specifies the class of title and identifies the owner. It contains any entries that affect the right of disposal.

The electronic official copy of the register follows this message.

Please note that this is the only official copy we will issue. We will not issue a paper official copy.

Applications are pending in Land Registry, which have not been completed against this title.



Title number ON293667

## B: Proprietorship Register continued

### Title absolute

- 1 PROPRIETOR: BRB (RESIDUARY) LIMITED (Co. Regn. No. 4146505) of 4th Floor, 1 Kemble Street, London WC2B 4AN.

## C: Charges Register

This register contains any charges and other matters that affect the land.

- 1 An Agreement dated 1 August 1972 made between (1) British Railways Board (2) National Carriers Limited and (3) National Freight Corporation contains provisions relating to a sale of the land.

*NOTE: Original filed under ON80709.*

- 2 By an Agreement dated 9 February 1983 made between (1) The British Railways Board and (2) The Oxford City Council the land tinted blue on the title plan was dedicated for the purpose of public open space

*NOTE: Copy filed under ON174283.*

- 3 (14.09.2010) A Demarcation Agreement dated 26 August 2010 made between (1) BRB (Residuary) Limited and (2) Network Rail Infrastructure Limited contains restrictive covenants.

*NOTE: Copy filed.*

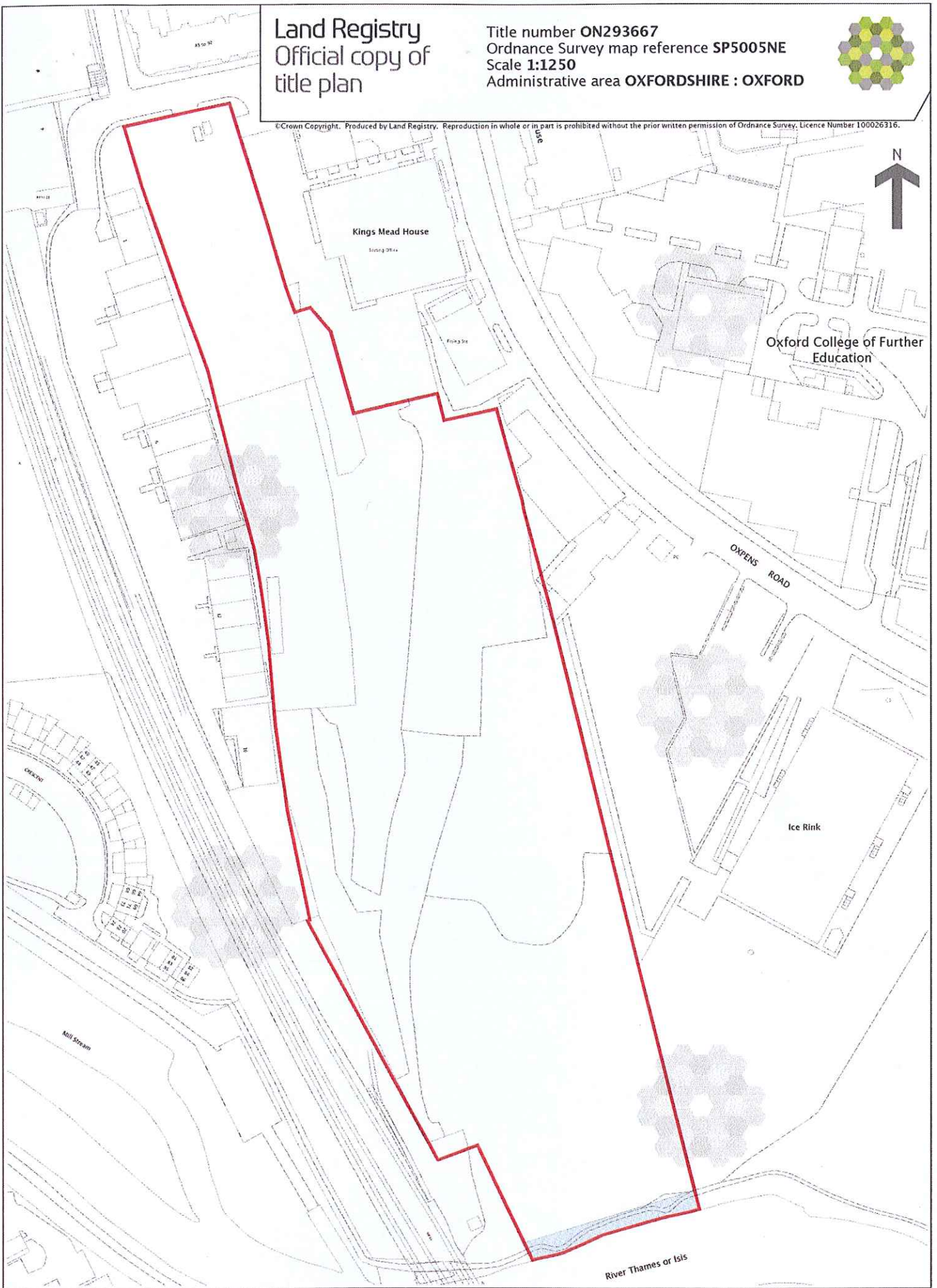
End of register

Land Registry  
Official copy of  
title plan

Title number **ON293667**  
Ordnance Survey map reference **SP5005NE**  
Scale **1:1250**  
Administrative area **OXFORDSHIRE : OXFORD**



© Crown Copyright. Produced by Land Registry. Reproduction in whole or in part is prohibited without the prior written permission of Ordnance Survey. Licence Number 100026316.



**These are the notes referred to on the following official copy**

The electronic official copy of the title plan follows this message.

Please note that this is the only official copy we will issue. We will not issue a paper official copy.

This official copy was delivered electronically and when printed will not be to scale. You can obtain a paper official copy by ordering one from Land Registry.

This official copy is issued on 08 April 2011 shows the state of this title plan on 30 March 2011 at 13:43:42. It is admissible in evidence to the same extent as the original (s.67 Land Registration Act 2002). This title plan shows the general position, not the exact line, of the boundaries. It may be subject to distortions in scale. Measurements scaled from this plan may not match measurements between the same points on the ground. See Land Registry Public Guide 7 - *Title Plans*.

This title is dealt with by the Land Registry, Gloucester Office .