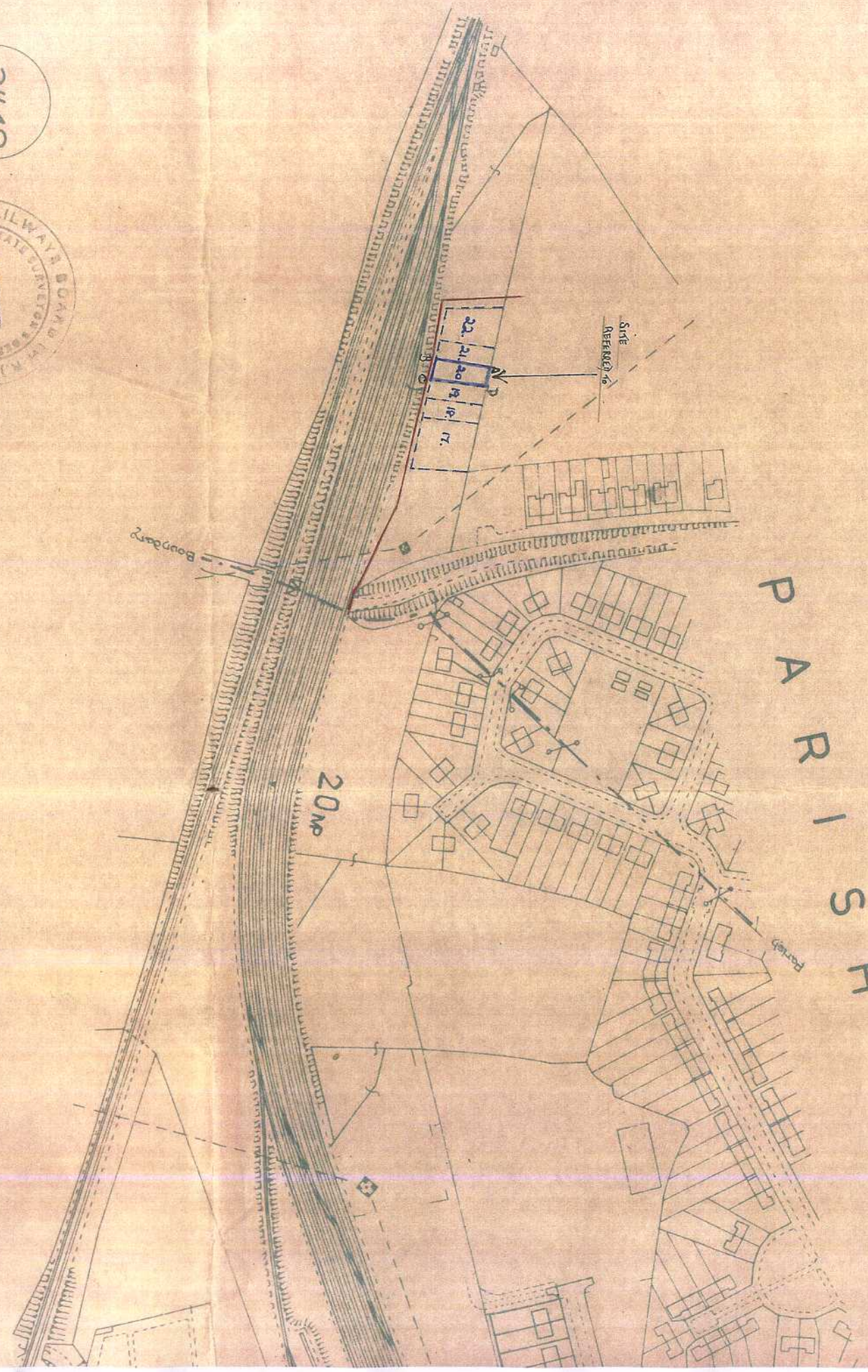


To ABERGWYNI

21148
5.336

BRITISH RAILWAYS BOARD
ESTATE DEVELOPMENT DEPT.
PLANNING OFFICE
- 2 NOV 1975
LONDON

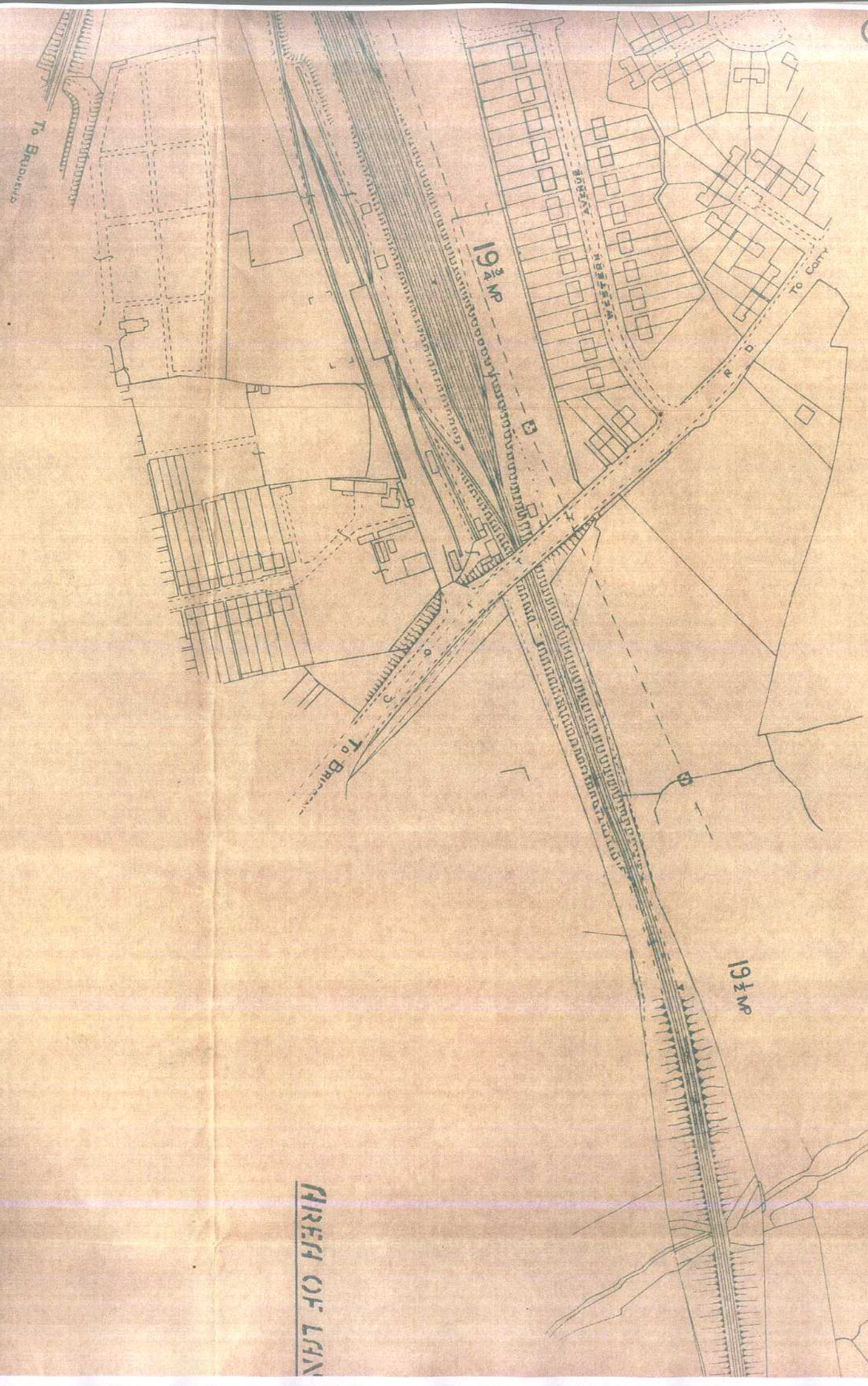


P A R R I S H

O

B R I D G E E N D

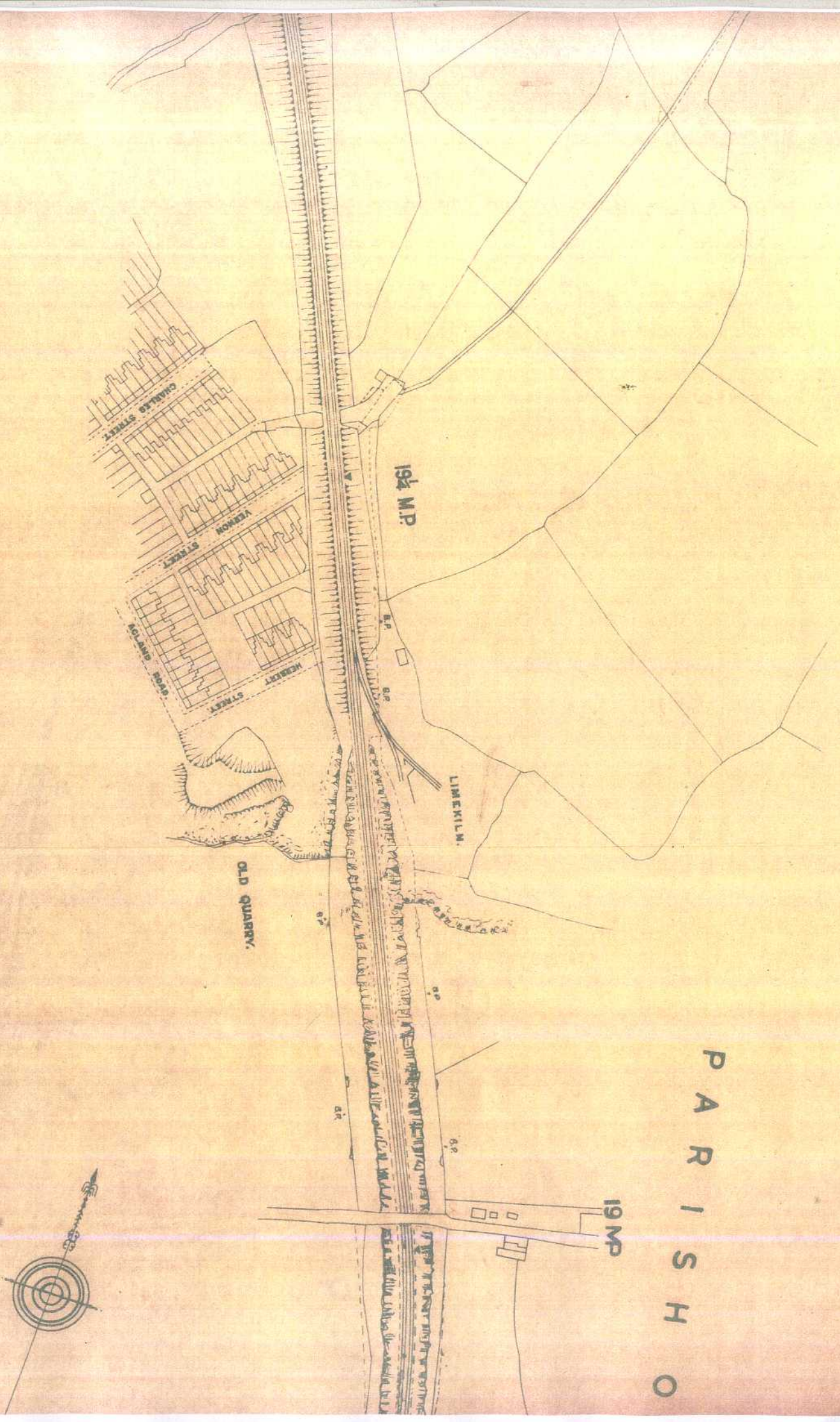
O F



AREA OF LAND

Plan referred to

P A R I S H O



Acres Sq.Yds. ha m²

OF LAND ~~ACQUIRED~~ 1311E 310

SCALE $\frac{1}{2500}$

PRINTED BY BRITISH RAILWAYS BOARD (W.)
AND BASED UPON THE ORDNANCE SURVEY MAP
WITH THE SANCTION OF THE CONTROLLER OF
N.M. STATIONERY OFFICE

I D G G E N D

TO LLANTRISANT

18 3/4 MP

PARISH TO CARDIFF

PARISH OF

EWENNY

To Bridgend

From Fishguard

From Fishguard

From Bridgend

BOUNDARY To Barry

To W...

